

DELI MEAT CASE

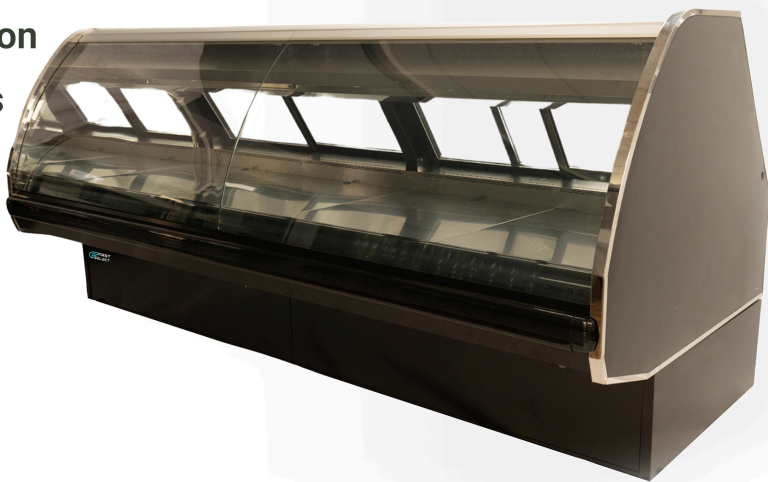
REMOTE & PLUG IN

Model: FDM



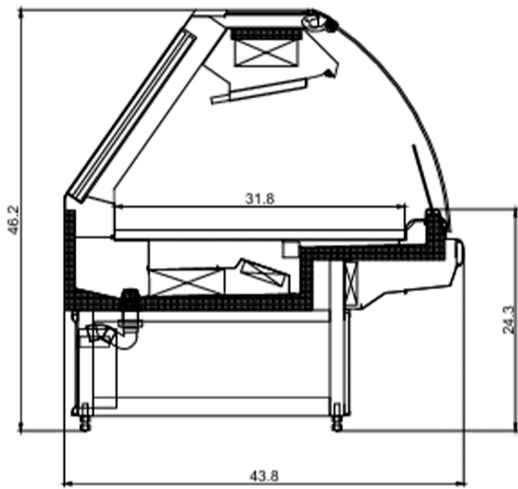
FEATURES

- Dual plug-in Compressor System Available
- Double evaporators (coils) to prevents dehydration
- Durable construction with stainless steel interior
- Carel controller
- Danfoss expansion valve
- Exterior Panel: Black (RAL 9005) solid wall panels
- LED light for energy-efficient illumination
- Sliding glass back door for easy access



TECHNICAL SPECS

Model	Size (inch) Length*depth*Hight	Cooling Capacity (BTU)	Electrical power	Temperature (°C)
FRI-1875	74*44*46	3753	220V/60HZ/1P W	-18 ~ -22
FRI-2500	103*44*46	5015	220V/60HZ/1P 1189W	-18~-22
FRI- 3750	148*44*46	7506	220V/60HZ/1P	-18~-22



Custom sizes are available to suit different needs. Sizes are approximate, and details might change without warning

The equipment works best in a controlled space with a temperature below 25° and a humidity level of 55%

Conditions outside these limits may affect functionality

WWW.FIRSTSELECT.CA

☎ 416 799 6964 - 416 655 7672

📍 Unit 14, 120 Norfinch Dr, M3N 1X3, Toronto

✉ info@firstselect.ca